

NEW PATTERNS

LAMINATED SHEET

Experience in sheet lamination. Experts in personalized service. Responsive, timely and consistent... all the things you want your supplier to be.

Rowmark Custom Laminations (RCL) offers a robust line of decorative films engineered for thermoformed and two-dimensional applications. We are your trusted supplier for laminated sheet with our low minimums, short lead times and premium quality.

DECORATIVE FILMS

We're the leader in custom designed decorative patterns of rotogravure hot stamp films. We offer an extensive array of popular stock patterns including wood grains, burls, granites, geometric patterns, metallics/brushed metals, natural stones, solid and specialty pigments... or work with our design team to engineer a custom look. Our industry experience enables us to offer cost effective solutions for our customers.

NEW PATTERNS

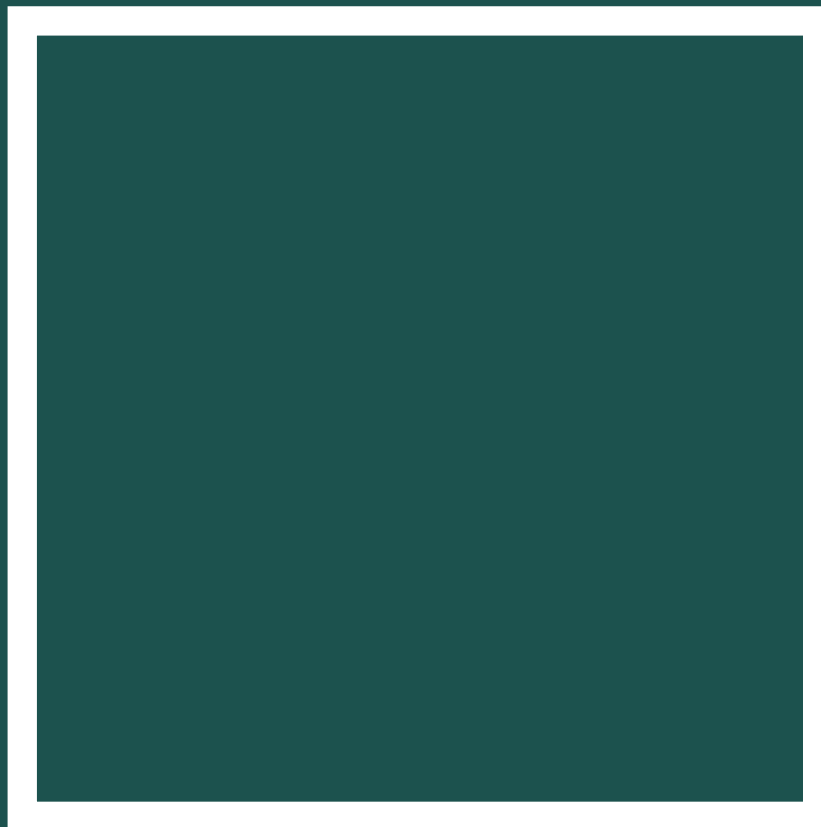


SOLID COLOR FOILS

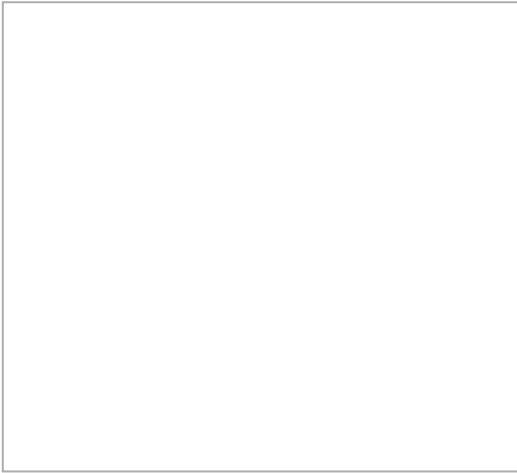
Select the perfect hue from Rowmark Custom Lamination's wide array of stock colors / pigmented films. Our harmonious palette of inspired colors are as elegant and timeless as they are forward-looking. RCL's color specialists can custom match any color to ensure a seamless look to an existing design.

As with all products, RCL has the ability to produce custom solid color foil finishes to create a one-of-a-kind effect for your application.

The patterns shown can be matched to any color or color combination.



All colors/patterns available upon request at marketing@rowmarklaminations.com, and are available in both a matte & gloss finish.



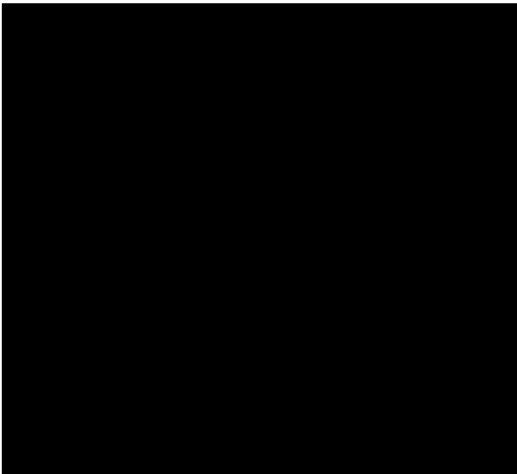
ST-0247 // White



ST-0240 // Glossy Silver



ST-0249 // Pewter



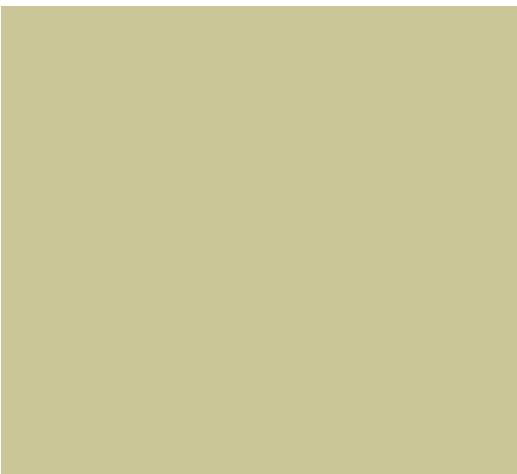
ST-0248 // Black



ST-0250 // Gray Flannel



ST-0252 // Shadow Blue



ST-0253 // Pumice



ST-0255 // Slate



ST-0269 // Navy Blue



ST-0272 // Jade



ST-2137 // Spectrum Blue



ST-2142 // Chocolate Brown



ST-2138 // Almond



ST-2140 // Spectrum Red



ST-0271 // Wedgewood



ST-2143 // Amethyst



ST-2144 // Rust



ST-2312 // Yellow



ST-2313 // Dark Brown



ST-2314 // Orange



ST-2315 // Mauve



ST-2316 // Burgundy



ST-2317 // Stone Blue



ST-2318 // Plum



ST-2171 // Glossy Gold



ST-2399 // Silver Sparkle



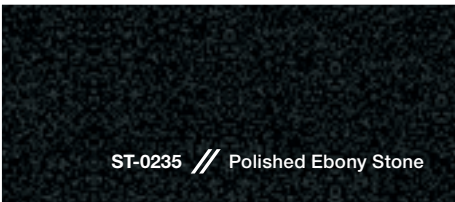
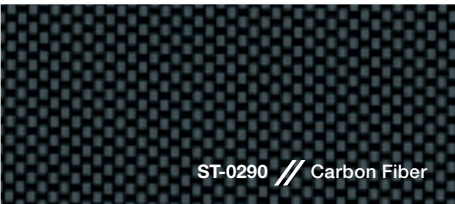
ST-2376 // Purple



ST-0251 // Teal



ST-0270 // Putty

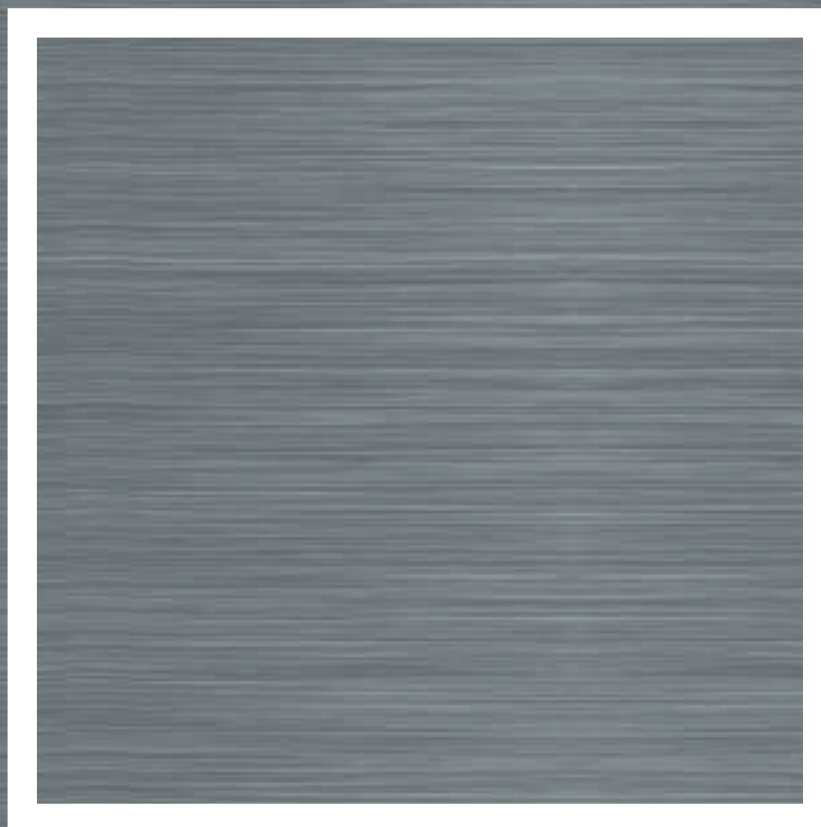


METALLIC & BRUSHED

Our lustrous metallic films create a decorative, distinctive, industrial look. Many of our metallic films also feature a sleek, brushed effect making them indistinguishable from real metals.

As with all products, Rowmark Custom Laminations has the ability to produce custom metallic finishes to create a one-of-a-kind effect for your application.

The patterns shown can be matched to any color or color combination.



All colors/patterns available upon request at marketing@rowmarklaminations.com, and are available in both a matte & gloss finish.



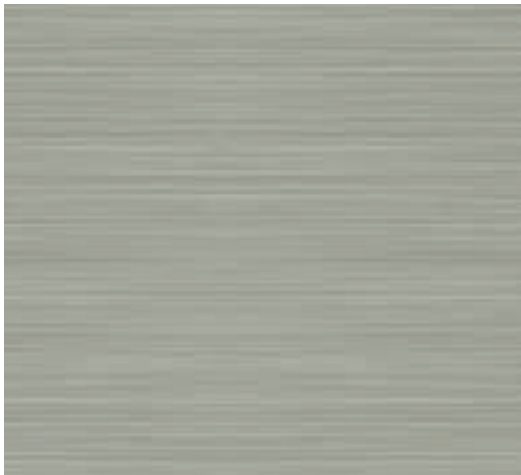
ST-0243 // Brush Pewter



ST-0244 // Dark Sheffield



ST-0245 // Roman Bronze



ST-0246 // Grey Sterling



ST-2292 // Brush Aluminum

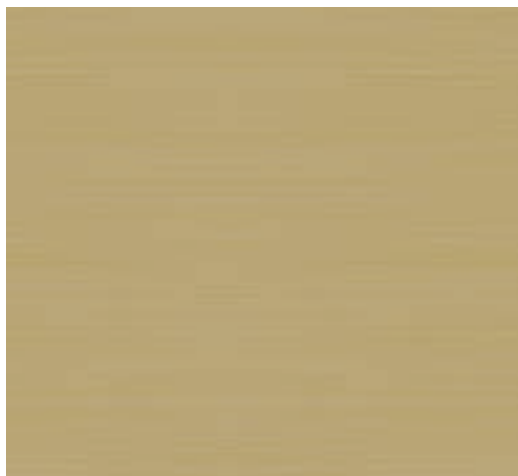
**non-formable*



ST-2295 // Flex Gold



ST-2296 // Flex Aluminum



ST-2297 // Brush Brass

**non-formable*



ST-2307 // Titanium Brush



ST-2333 // Radiant Gold

**non-formable*



ST-2334 // Radiant Silver

**non-formable*



ST-2346 // Brush Copper

**non-formable*



ST-2362 // Brushed Amber

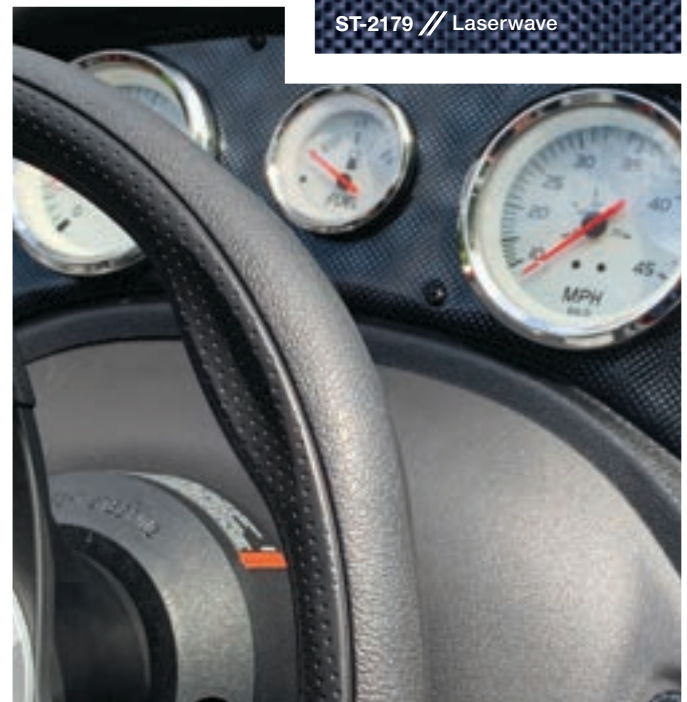
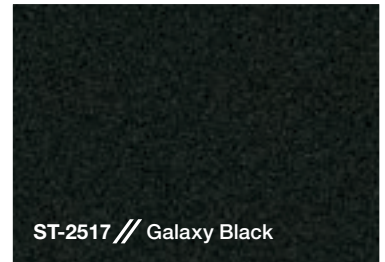
**non-formable*



ST-2503 // Matte Brushed Sterling



ST-2518 // Double Cross Brush

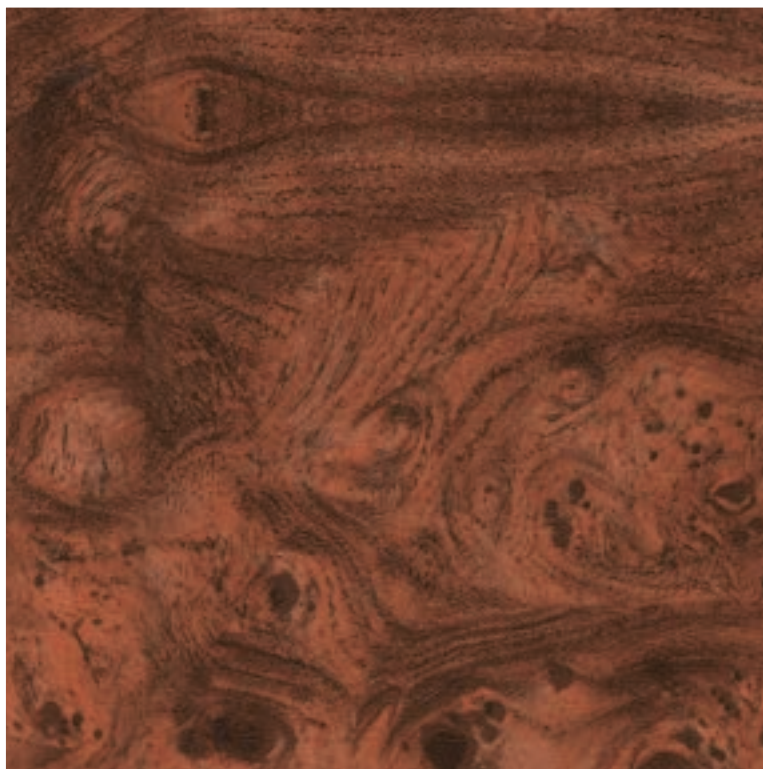


BURL WOOD GRAINS

Enjoy natural beauty with Rowmark Custom Laminations' burl wood grain films. These films achieve the unique look of this well-appointed wood grain to suit a vast array of applications.

As with all products, RCL has the ability to produce custom burl wood grain finishes to create a one-of-a-kind effect for your application.

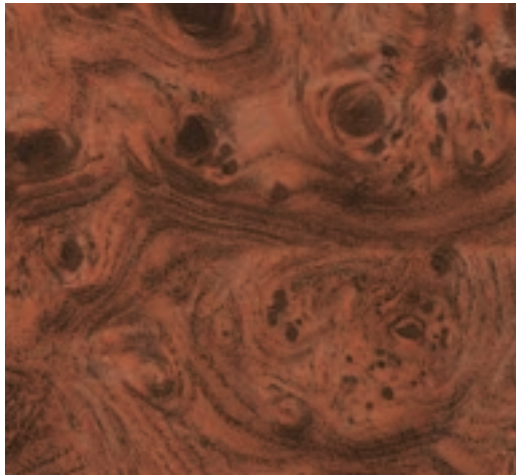
The patterns shown can be matched to any color or color combination.



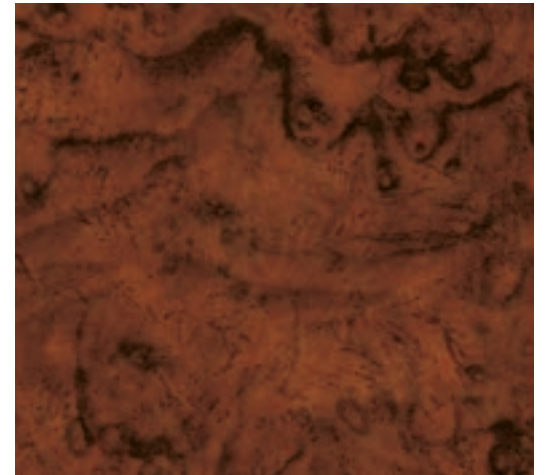
All colors/patterns available upon request at marketing@rowmarklaminations.com,
and are available in both a matte & gloss finish.



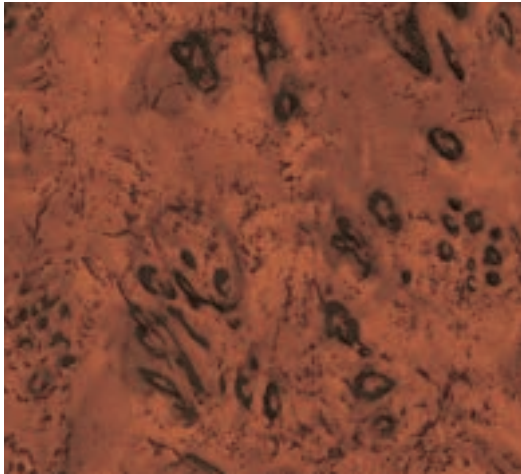
ST-0200 // Glossy Burl



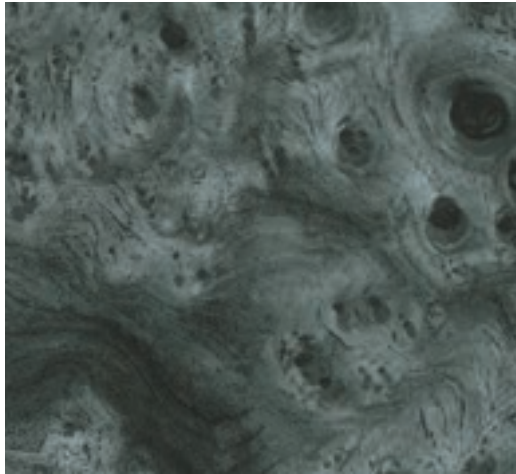
ST-0201 // Bravo Burl



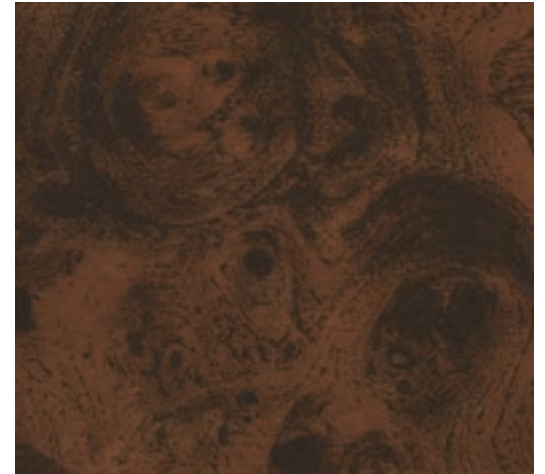
ST-0202 // Florentine Burl



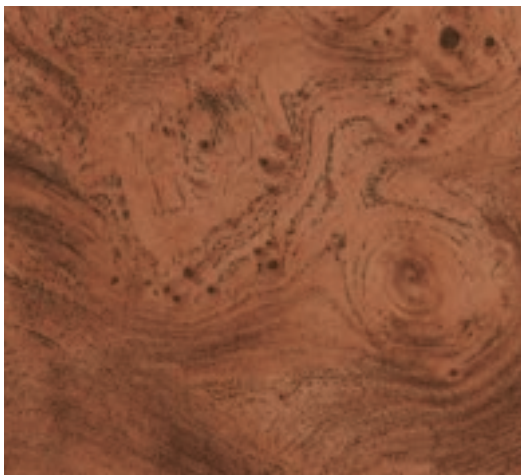
ST-0280 // Cruiser Burl



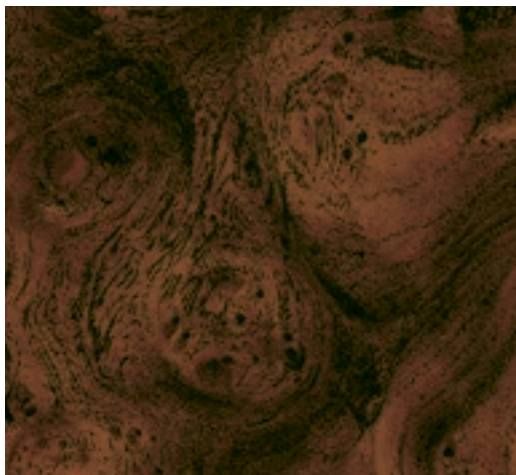
ST-0203 // Gray Burl



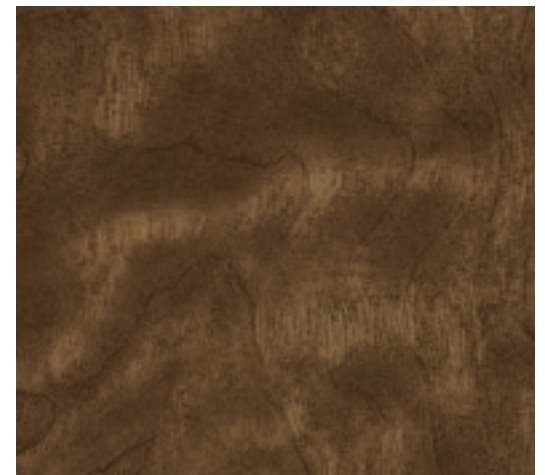
ST-0292 // Regal Burl



ST-2112 // European Burl



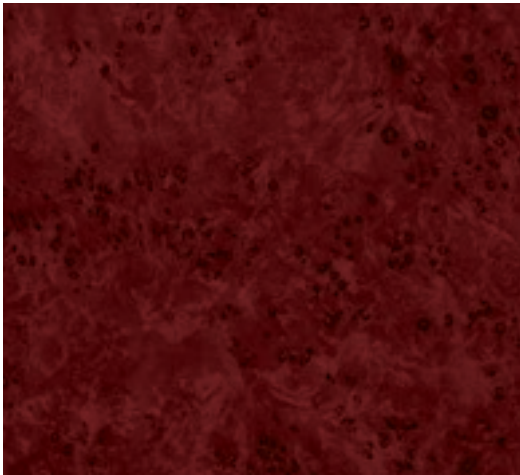
ST-2134 // Executive Regal Burl



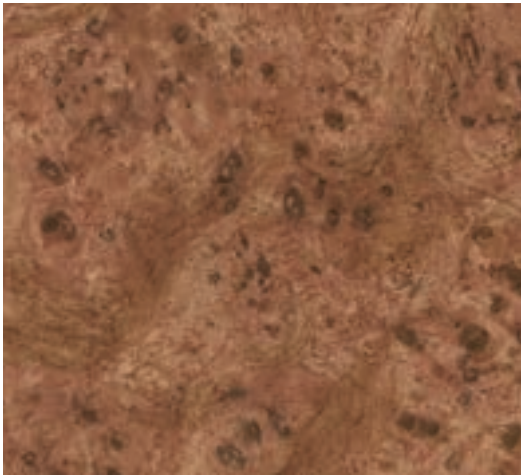
ST-2467 // Tamo Ash



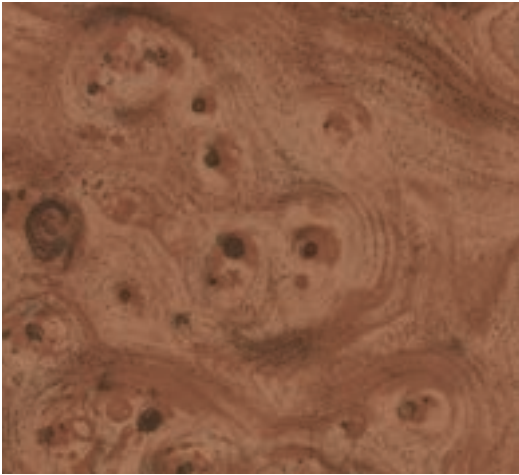
ST-2163 // Black Metallic Burl



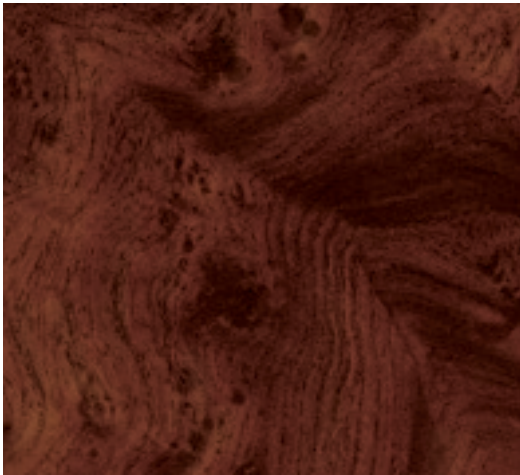
ST-2492 // Cherry Birdseye



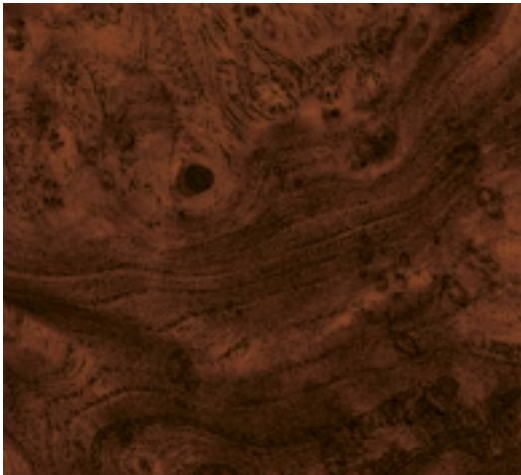
ST-2172 // Chestnut Burl



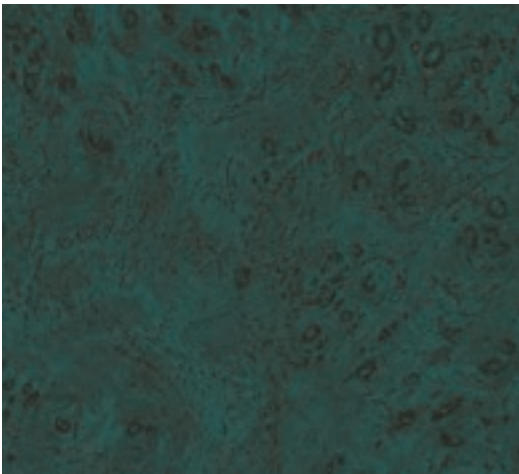
ST-2187 // Vermillion Burl



ST-2213 // Oxford Burl



ST-2248 // Indian Burl



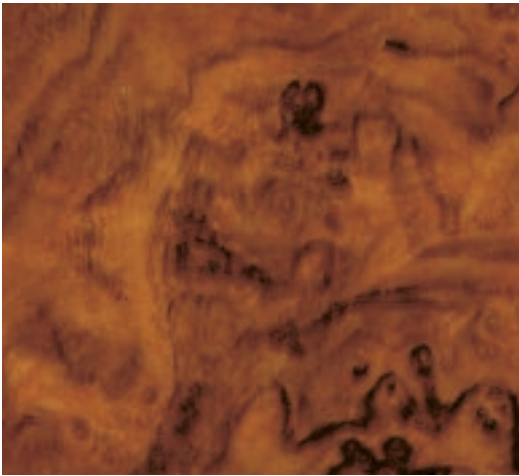
ST-2217 // Forest Burl



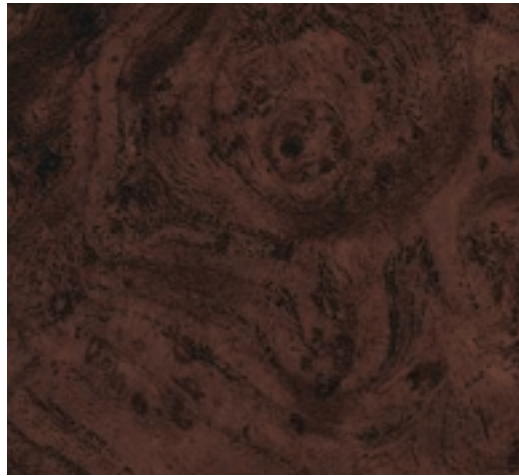
ST-2250 // Birdseye Maple



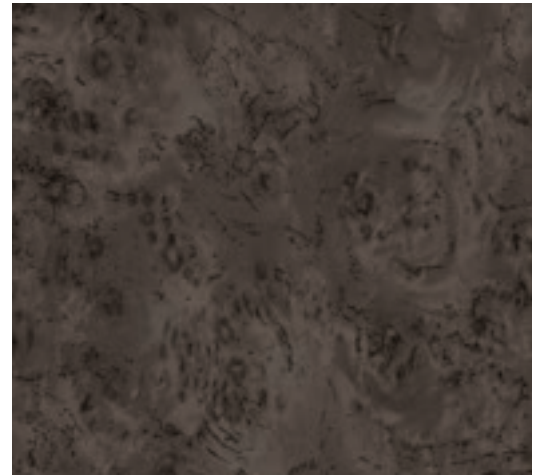
ST-2273 // Italian Walnut



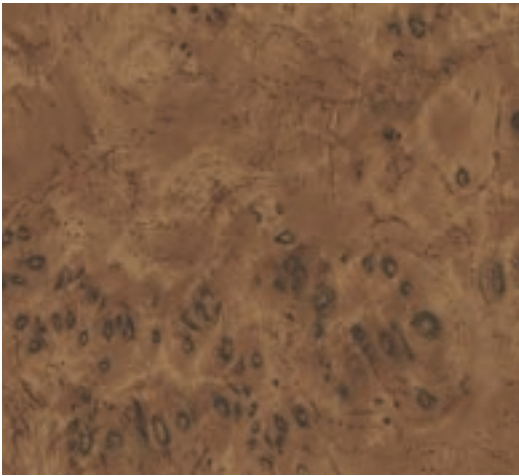
ST-2275 // California Walnut



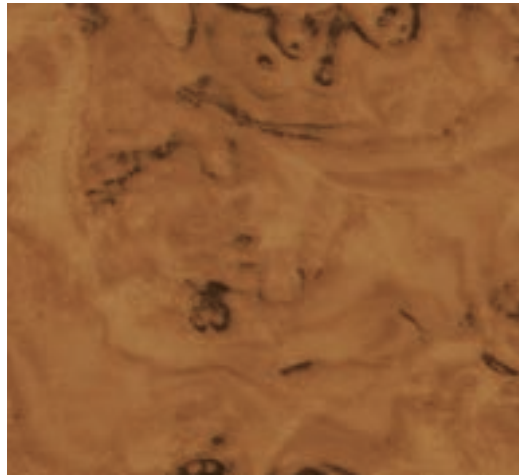
ST-2283 // Majestic Burl



ST-2293 // Honda Burl



ST-2294 // Beechnut Burl



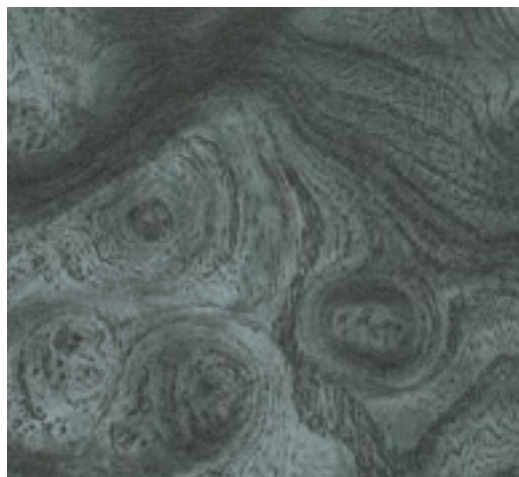
ST-2309 // Maple Burl



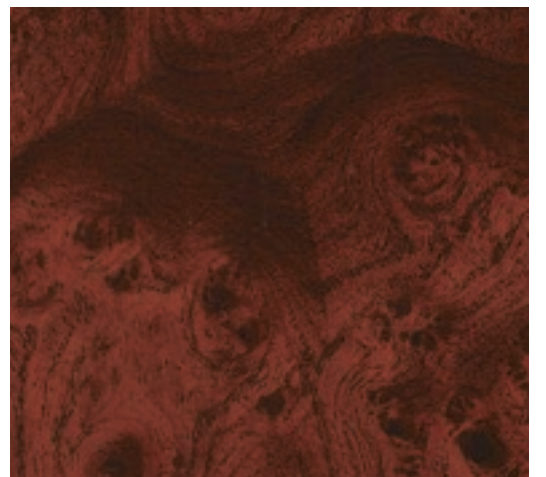
ST-2484 // Traditional Burl



ST-2382 // Butterscotch Burl



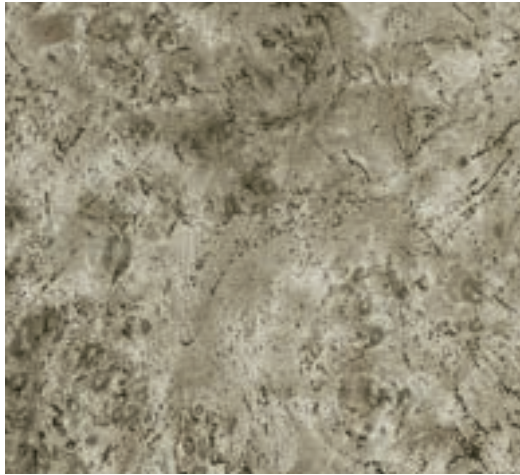
ST-2383 // Metallic Gray Burl



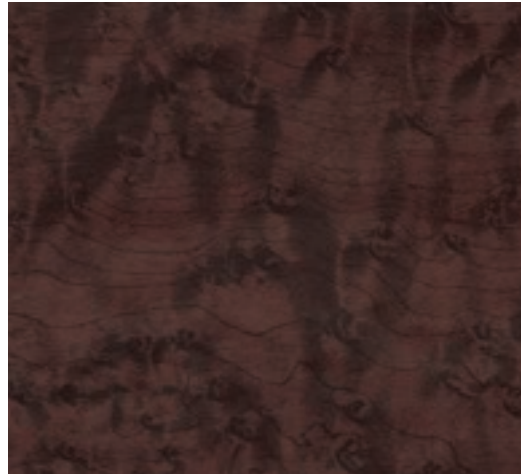
ST-2403 // Regal Burl II



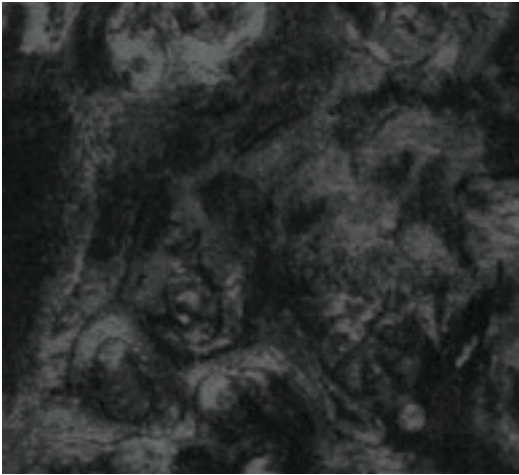
ST-2408 // Steel Burl



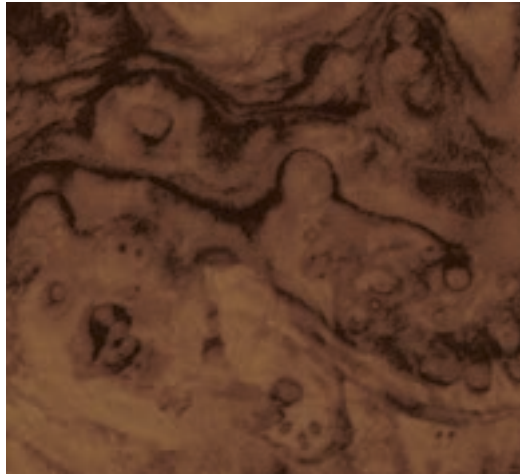
ST-2409 // Beliveau Burl



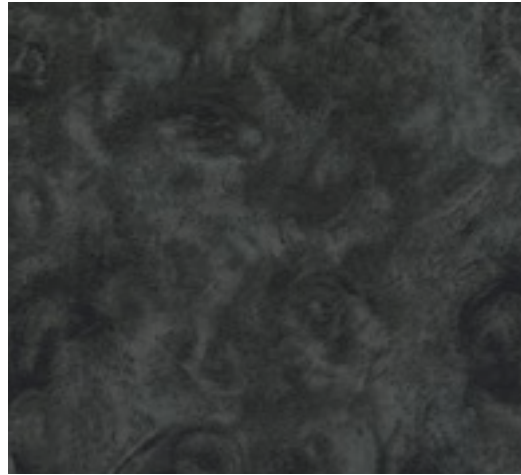
ST-2411 // Tobacco Burl



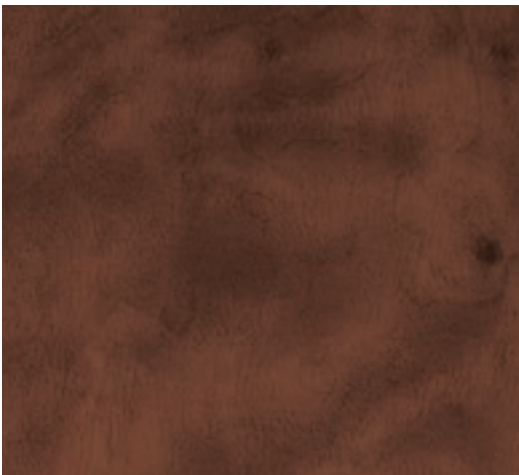
ST-2458 // Black Opal Burl



ST-2465 // French Walnut



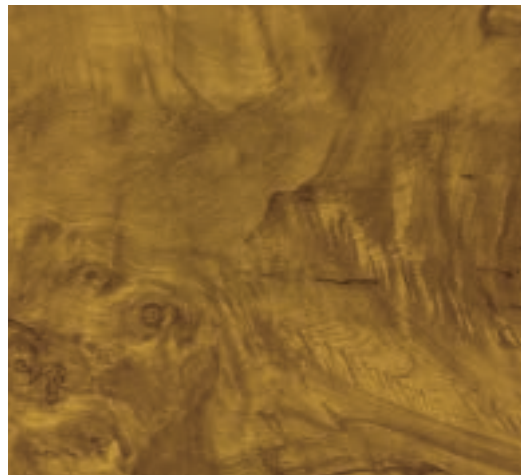
ST-2474 // Black Pearl Burl



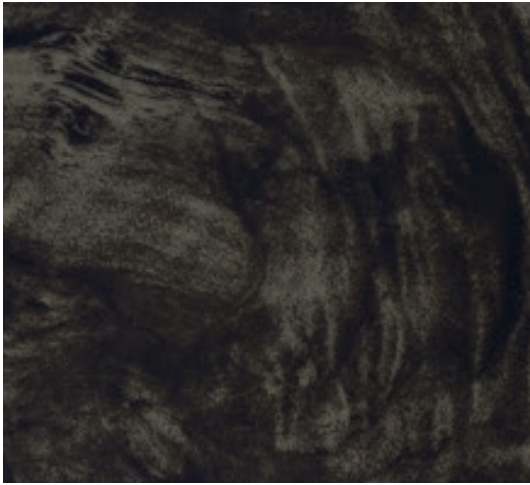
ST-2480 // Sable Ash



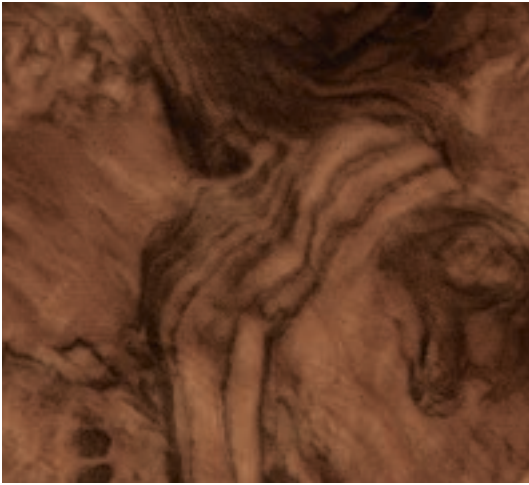
ST-2476 // Ziricote Gold



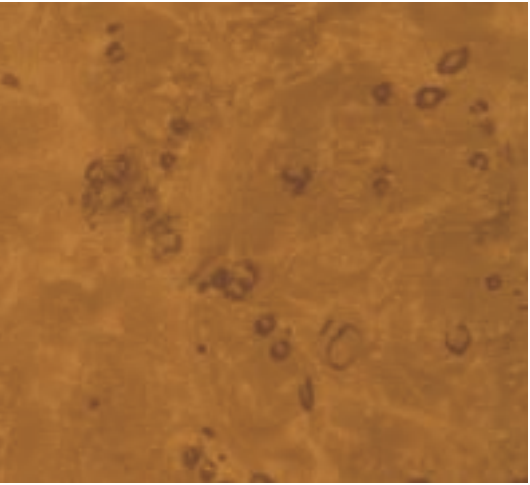
ST-2481 // Honey Teak



ST-2477 // Figured Walnut



ST-2516 // American Beast



ST-2531 // Mustard Burl

STRAIGHT WOOD GRAINS

The classic styling of Rowmark Custom Laminations' straight wood grain films offer the winning combination of tradition and class for any application.

As with all products, RCL has the ability to produce custom straight wood grain finishes to create a one-of-a-kind effect for your application.

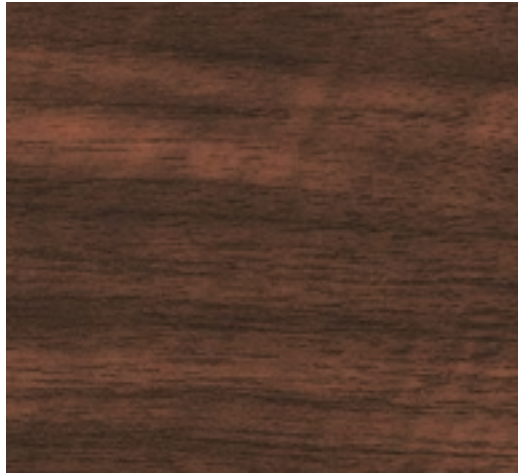
The patterns shown can be matched to any color or color combination.



All colors/patterns available upon request at marketing@rowmarklaminations.com,
and are available in both a matte & gloss finish.



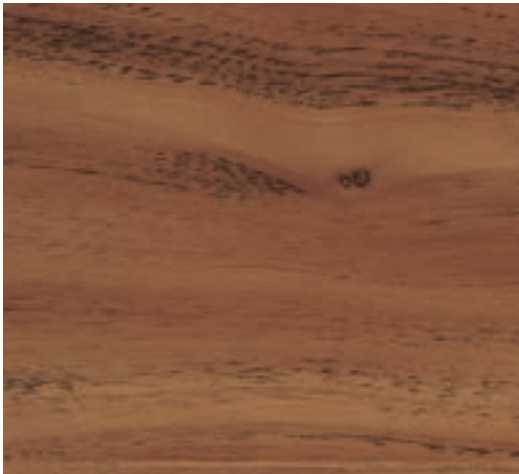
ST-0213 // Medium Walnut



ST-2101 // Metallic Cherry



ST-2160 // Regency Oak



ST-2258 // South American Rosewood



ST-2269 // Concord Sierra



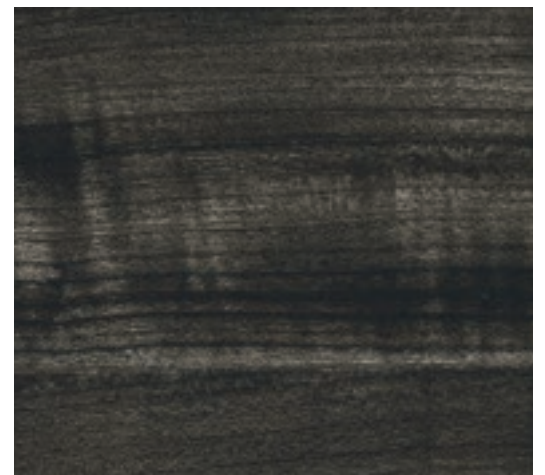
ST-2276 // Prairie Walnut



ST-2303 // African Zebrano



ST-2410 // Tiger Wood



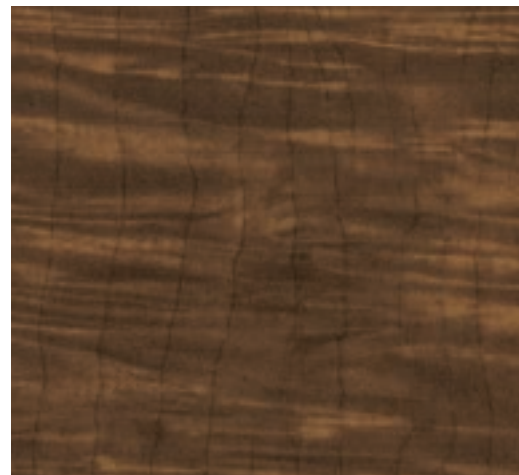
ST-2358 // Grey Wood



ST-2420 // Traditional white Oak



ST-2413 // Charcoal Oak



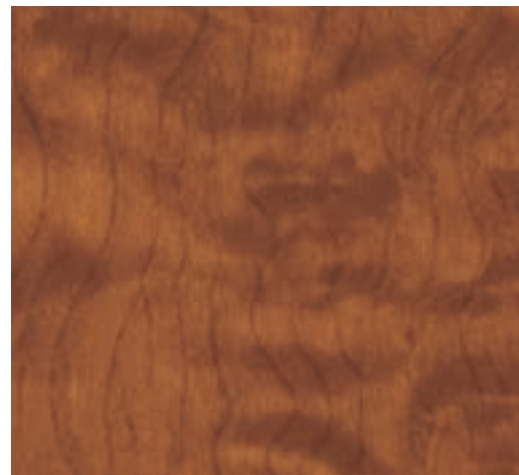
ST-2463 // Dark Curly Maple



ST-2464 // Arcadian Iroko



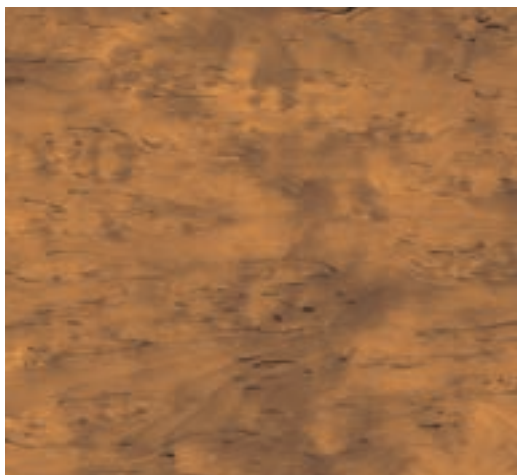
ST-2468 // Ebony Koa



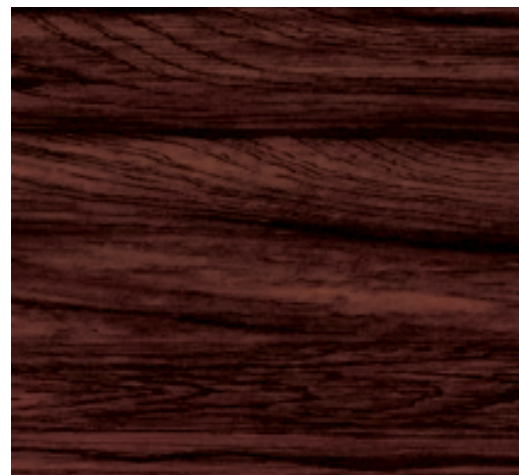
ST-2470 // Quilted Maple



ST-2471 // Medium Crack Cherry



ST-2490 // Karelian Birch



ST-2502 // Rosewood



ST-2498 // Bamboo



ST-2535 // Silver Oak



ST-2534 // Autumn Rosewood



ST-2536 // Weathered Rosewood

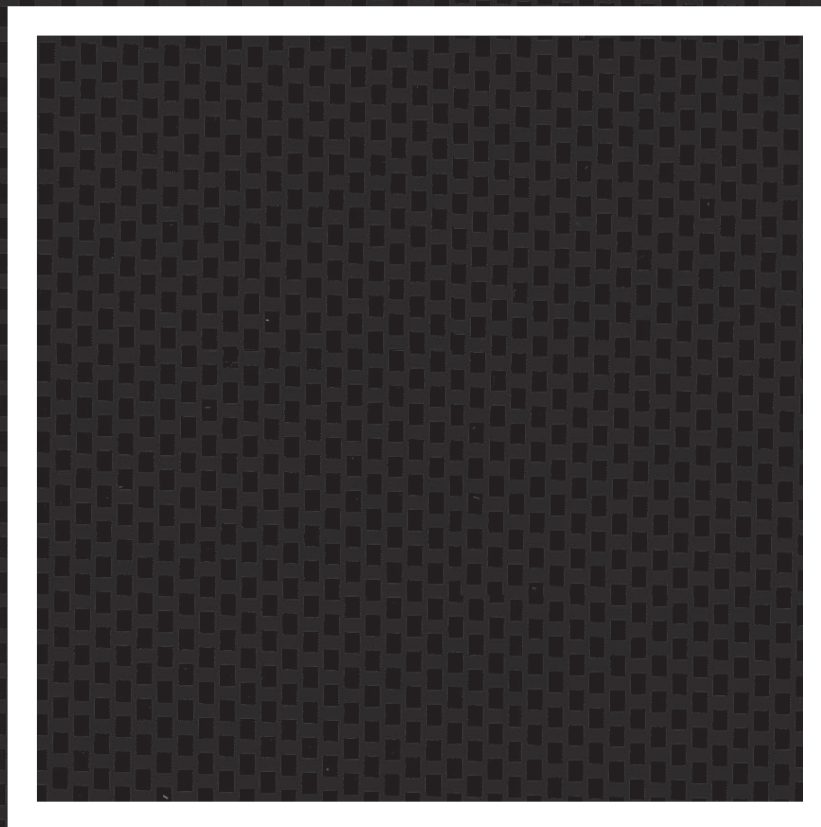
GEOMETRICS

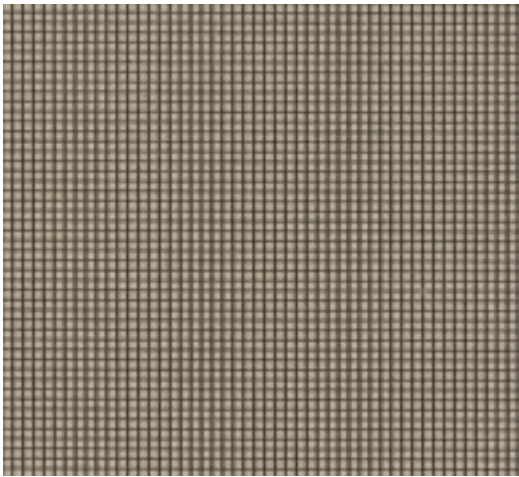
Add a dazzling look with Rowmark Custom Laminations' contemporary, high definition geometric patterns. Whether you're trying to achieve a minimalist and simple look or one that's very complex, these patterns were developed from the most trendy designs and shapes. From popular carbon fiber patterns to "high tech" circuit board patterns, RCL offers the industry the largest assortment of geometric patterned films.

As with all products, we have the ability to produce custom geometric finishes to create a one-of-a-kind effect for your application.

The patterns shown can be matched to any color or color combination.

All colors/patterns available upon request at marketing@rowmarklaminations.com, and are available in both a matte & gloss finish.

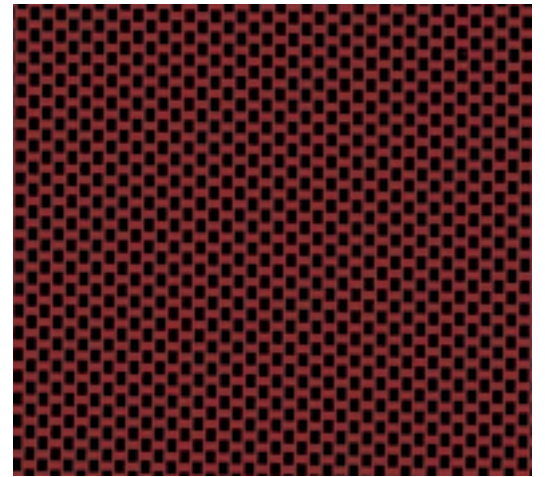




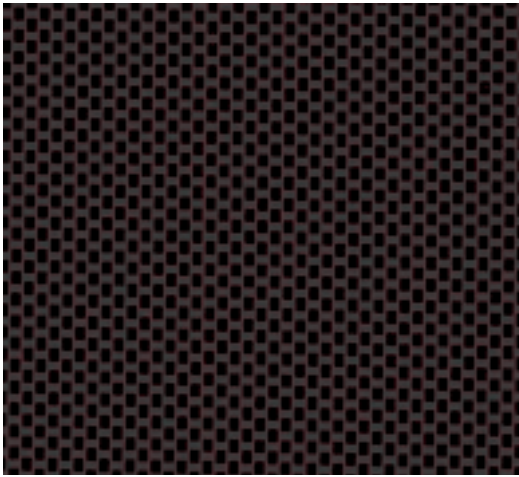
ST-0225 // Beige Grid



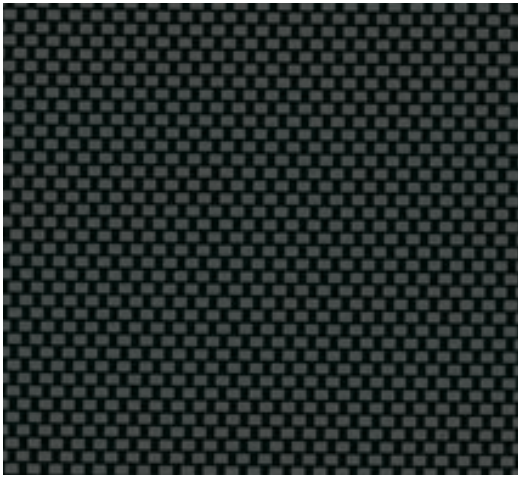
ST-0290 // Carbon Fiber



ST-0261 // Black Graphite Red



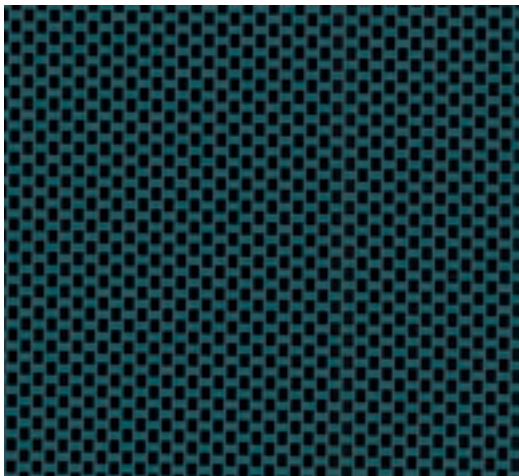
ST-0297 // Black Graphite Green



ST-0291 // Horizontal Carbon Fiber



ST-2120 // Silver Graphite Gray



ST-0298 // Black Graphite Teal



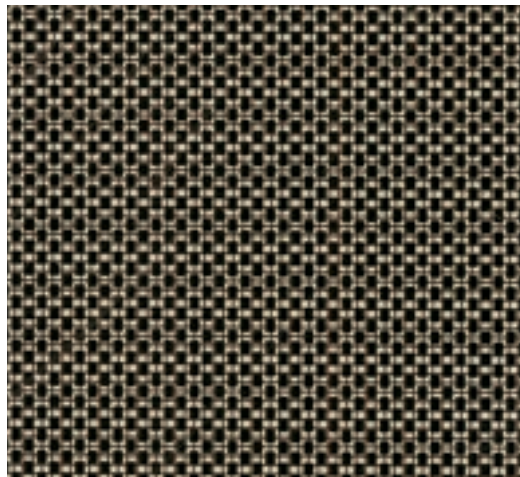
ST-2124 // Silver Graphite Aqua



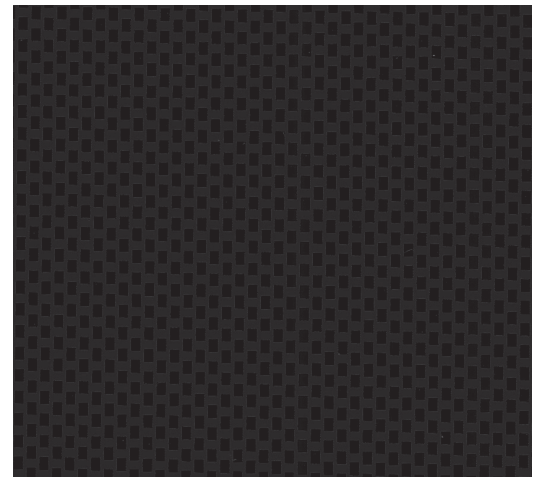
ST-2122 // Silver Graphite Teal



ST-2147 // Chain Link



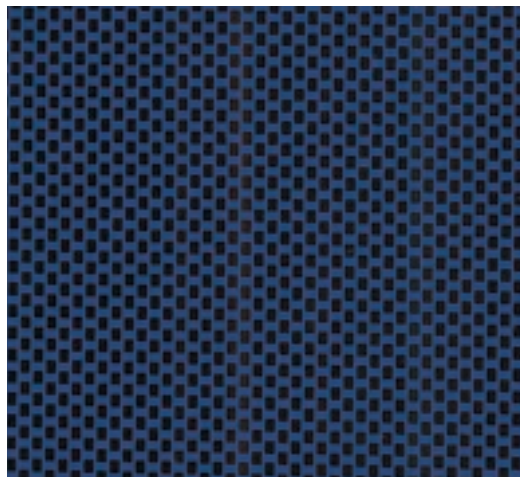
ST-2146 // Beige Circuit Board



ST-2150 // Marine Graphite



ST-2149 // Silver Graphite Steel



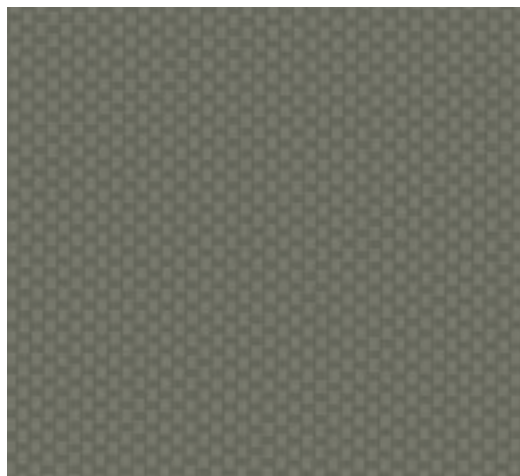
ST-2154 // Black Graphite Purple



ST-2153 // Silver Graphite Purple



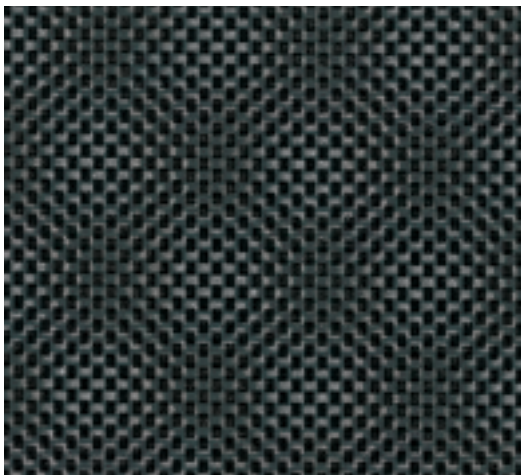
ST-2165 // Silver Graphite Brown



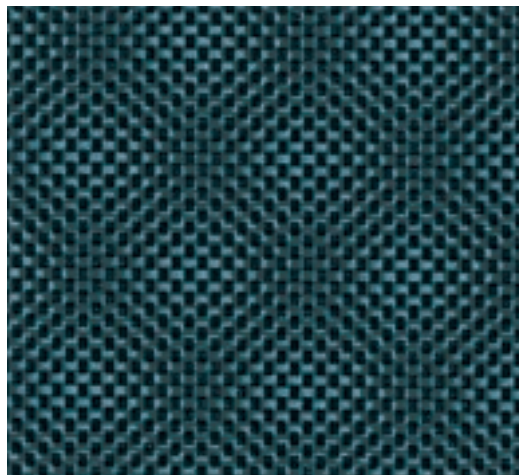
ST-2158 // Silver Graphite Metallic



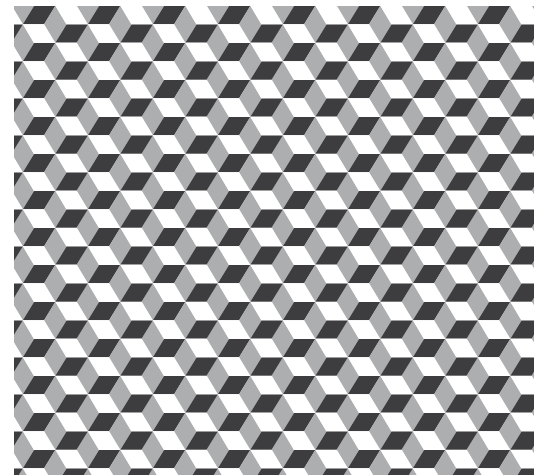
ST-2491 // Diamond Drid



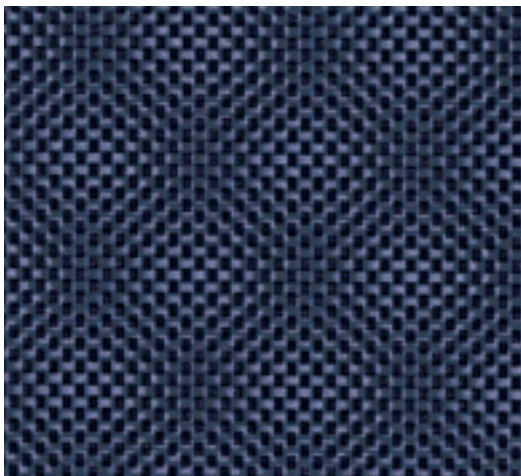
ST-2178 // Midnight Laserwave



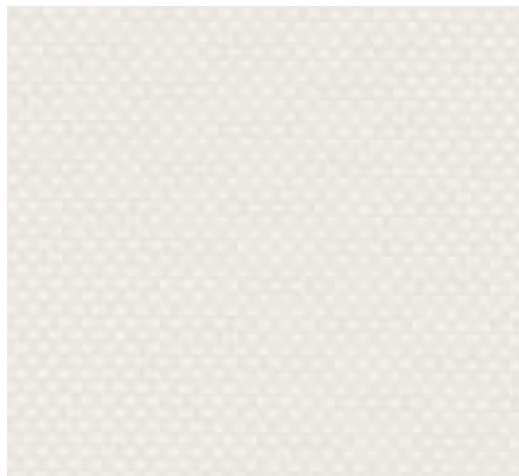
ST-2177 // Marine Laserwave



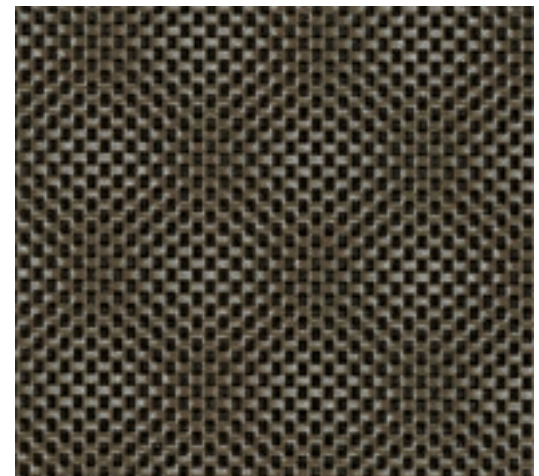
ST-2500 // 3D Cube



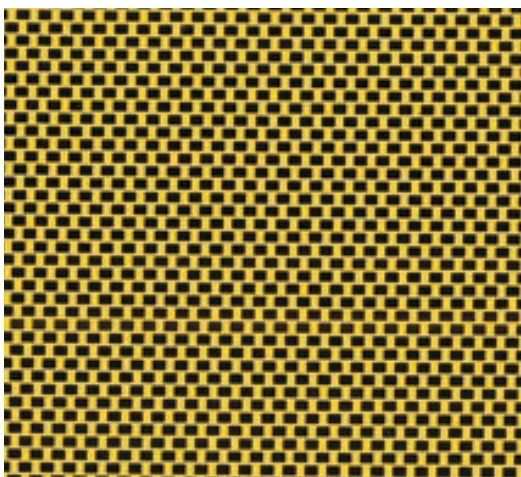
ST-2179 // Violet Laserwave



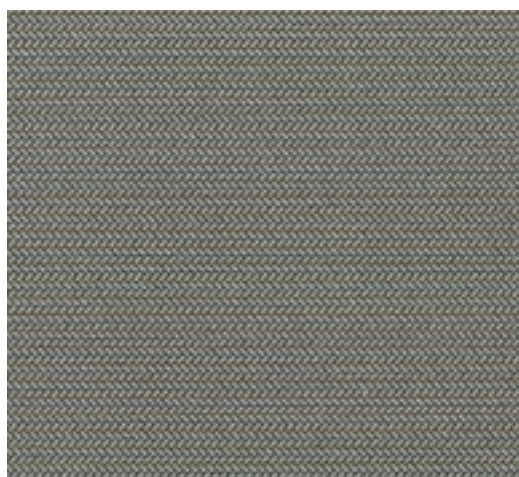
ST-2216 // Silver Graphite White



ST-2190 // Leather Laserwave



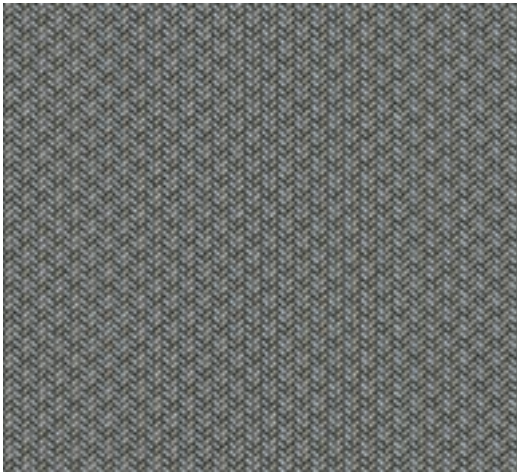
ST-2264 // Black Graphite Yellow



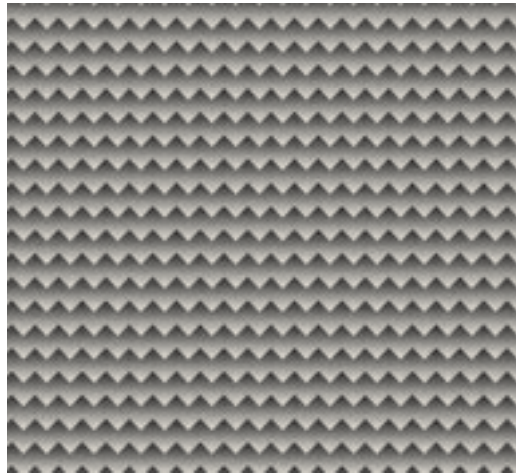
ST-2263 // Lemans



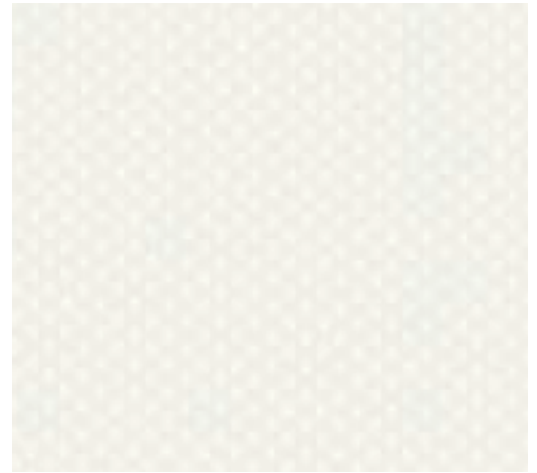
ST-2266 // Silver Graphite Green



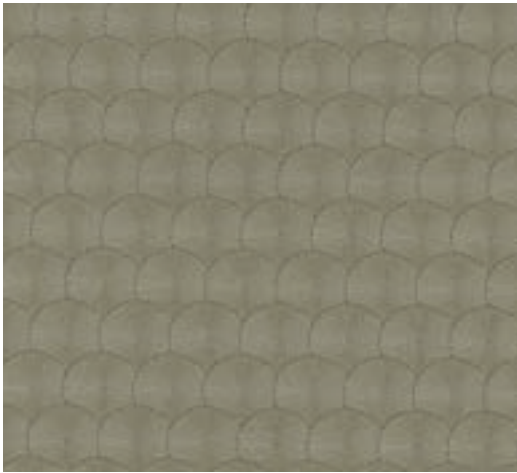
ST-2304 // Micro Weave



ST-2501 // Carbon Fusion



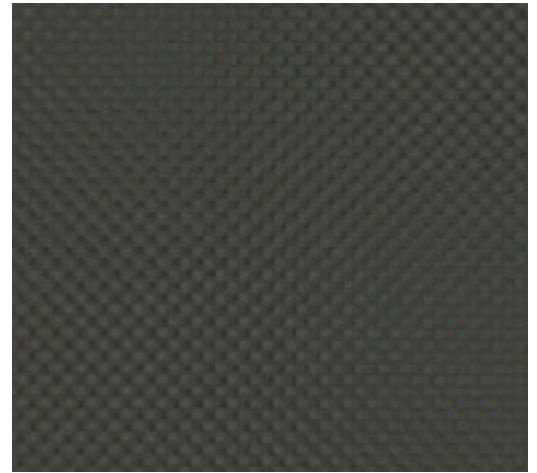
ST-2310 // Pearlescent Fiber



ST-2374 // Turned Titanium



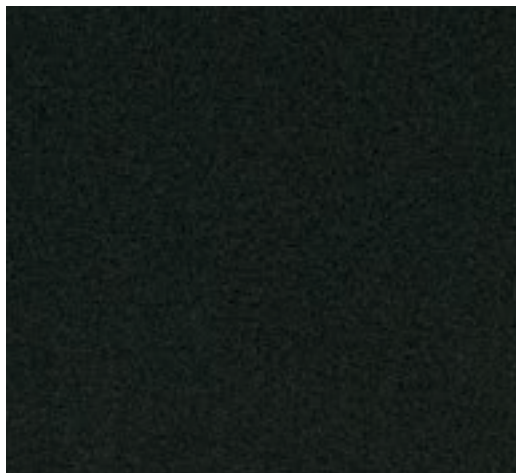
ST-2478 // Silver Carbon Fiber



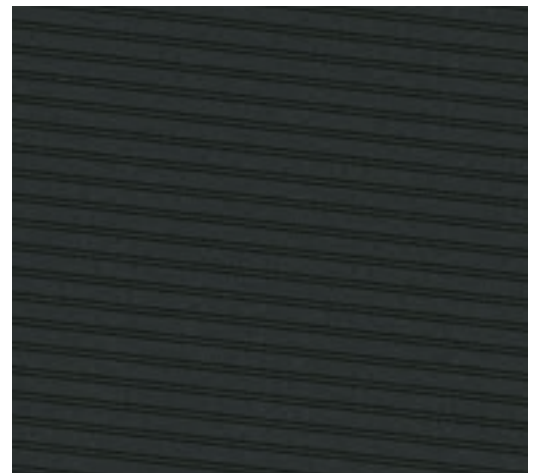
ST-2469 // 3D Carbon Fiber



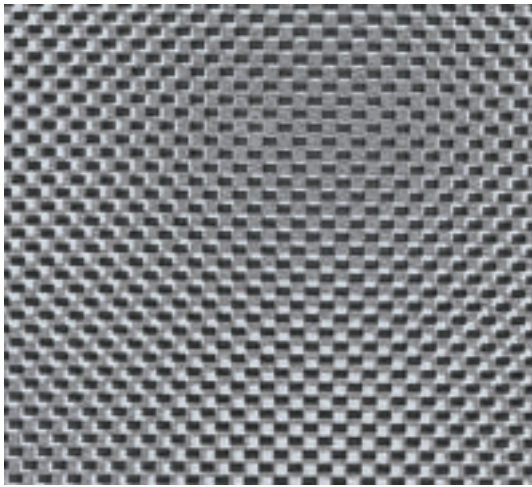
ST-2493 // Silver Carbon Fiber Mesh



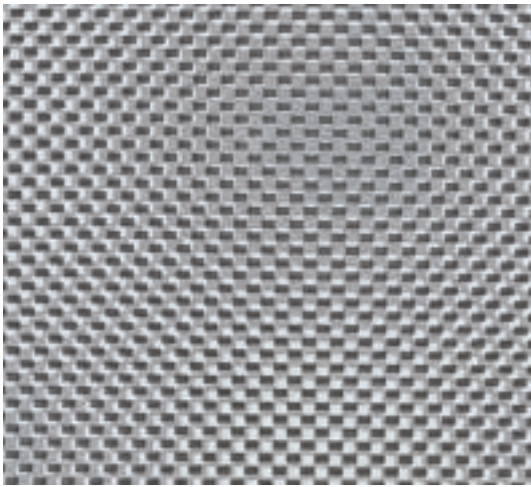
ST-2517 // Galaxy Black



ST-2519 // Microline



ST-2532 // Pewter 3D



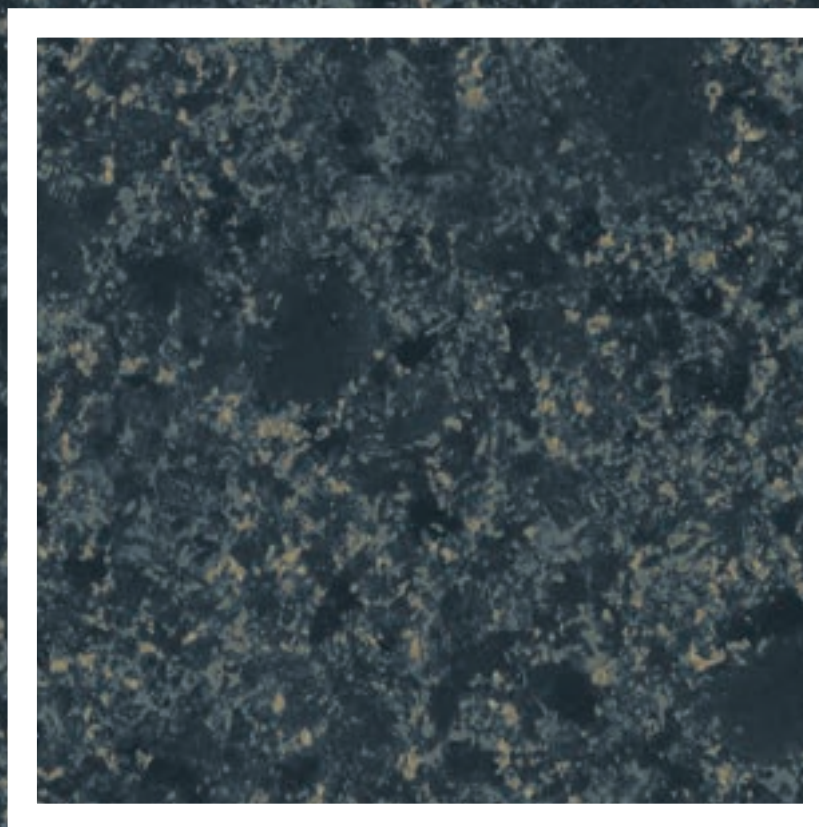
ST-2533 // Silver 3D

NATURAL STONES

Stone: the very word evokes a sense of timelessness and Rowmark Custom Laminations Natural Stones offer the raw beauty of smooth rock marble and granite finishes.

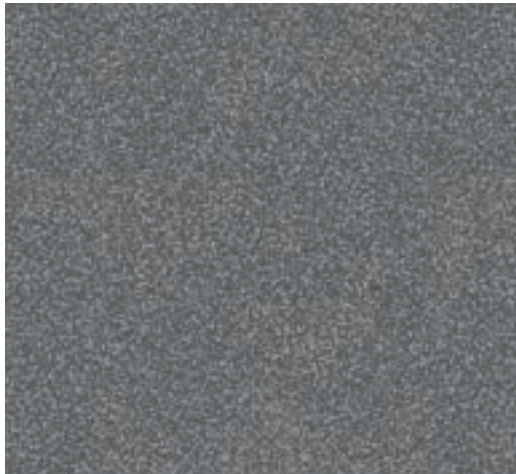
As with all products, RCL has the ability to produce custom stone finishes to create a one-of-a-kind effect for your application.

All colors/patterns available upon request at marketing@rowmarklaminations.com, and are available in both a matte & gloss finish.





ST-0235 // Polished Ebony Stone



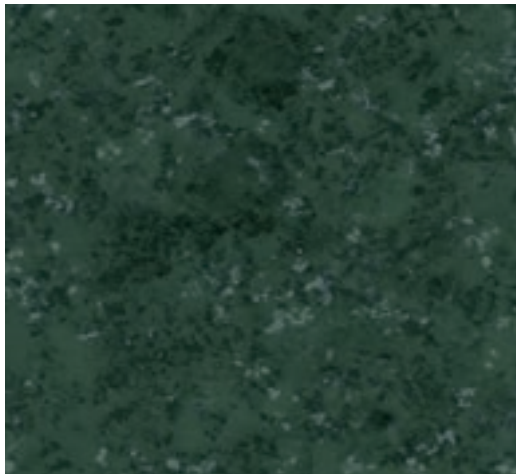
ST-0237 // Polished Pearl Stone



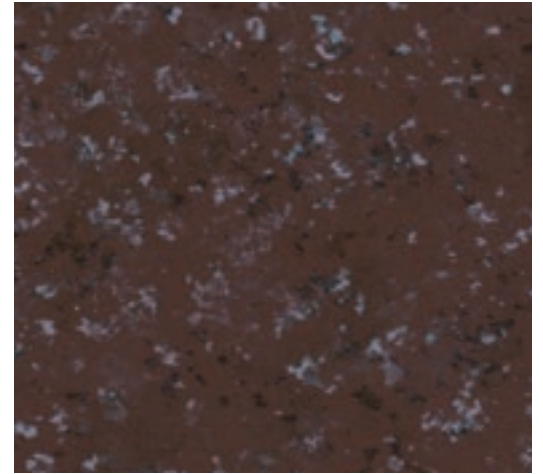
ST-2192 // Mocha Marble



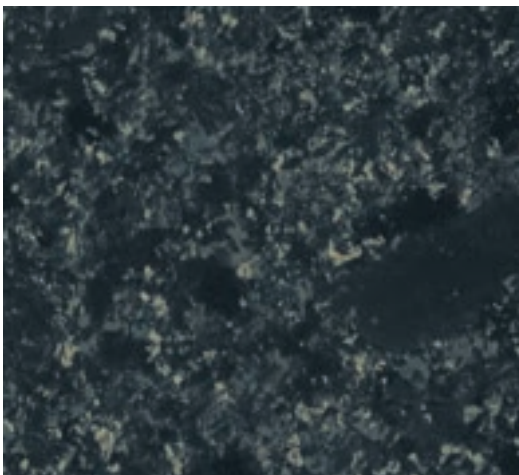
ST-0299 // Explorer Green



ST-2194 // Verde Green Marble



ST-2193 // Cranberry Marble



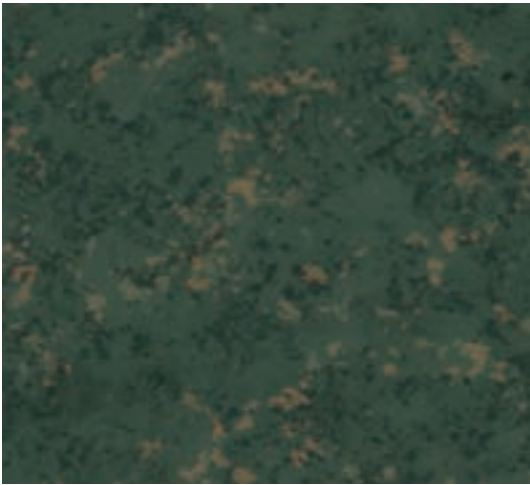
ST-2195 // Deep Charcoal Marble/Off White



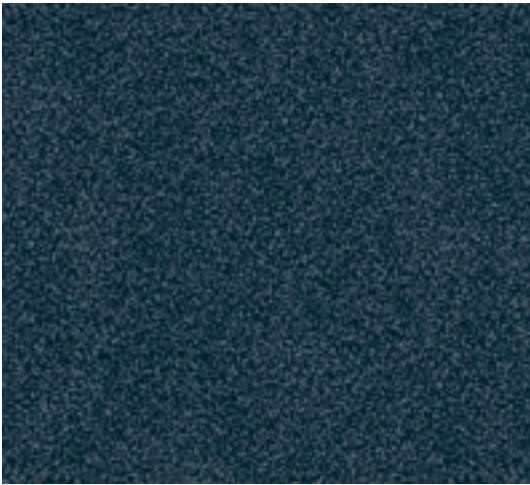
ST-2226 // Black Starlite



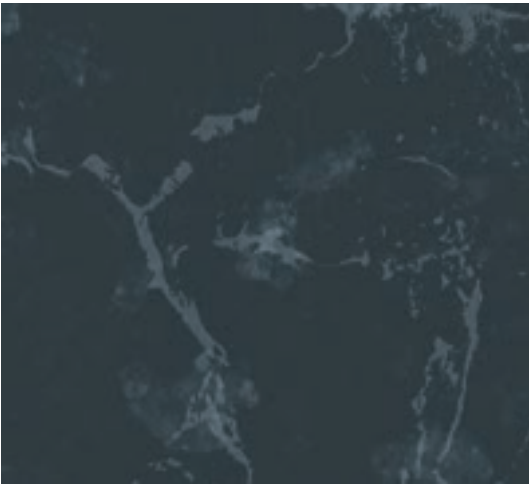
ST-2229 // Spruce Starlite



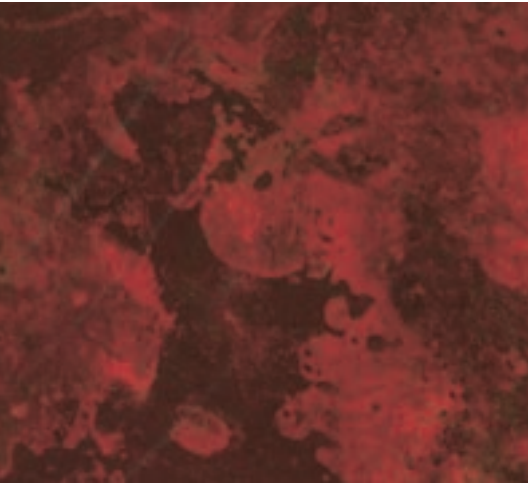
ST-2238 // Verde Green Gold



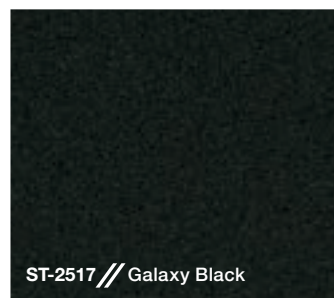
ST-2245 // Blue Starlite



ST-2338 // Black Onyx



ST-2341 // Rustico Granite

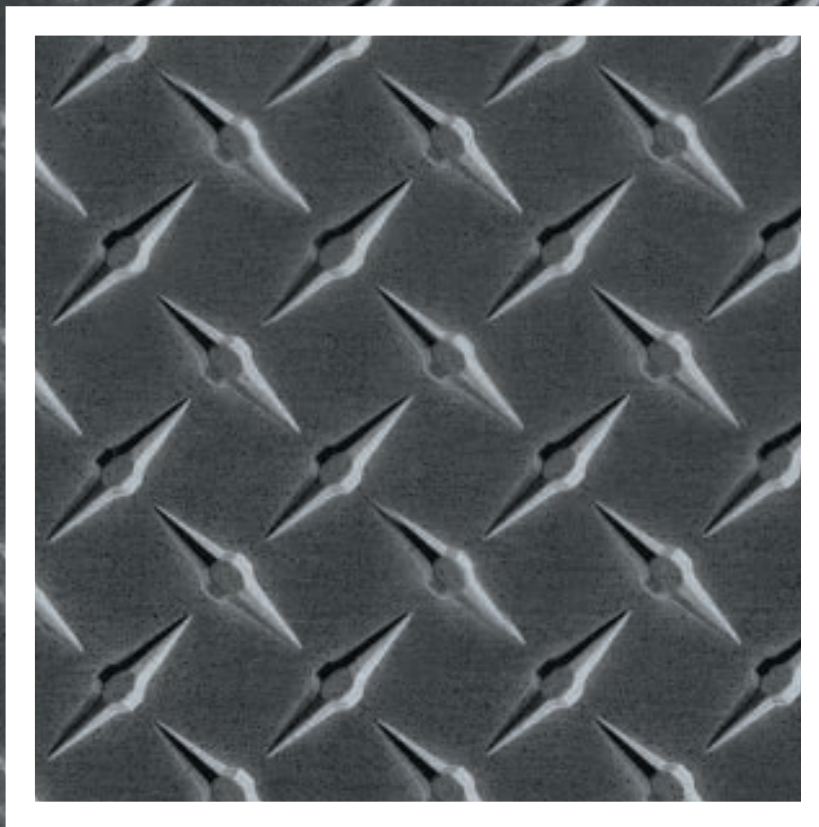


SPECIALTY

Sometimes a project can be a bit “out of the ordinary.” Whatever your unique application, Rowmark Custom Laminations is prepared to meet your needs with a variety of specialty films, including camouflage, perforated metal and diamond plate patterns.

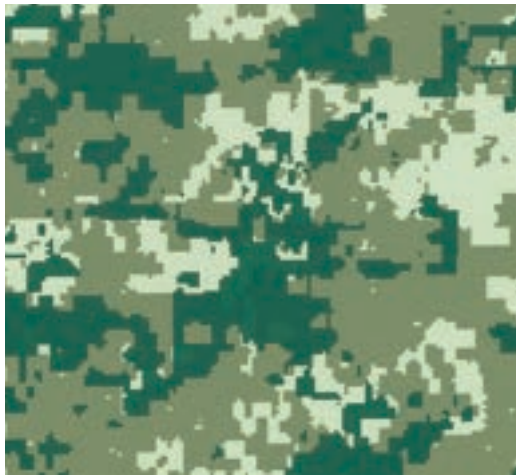
As with all products, we have the ability to produce custom specialty finishes to create a one-of-a-kind effect for your application.

All colors/patterns available upon request at marketing@rowmarklaminations.com, and are available in both a matte & gloss finish.

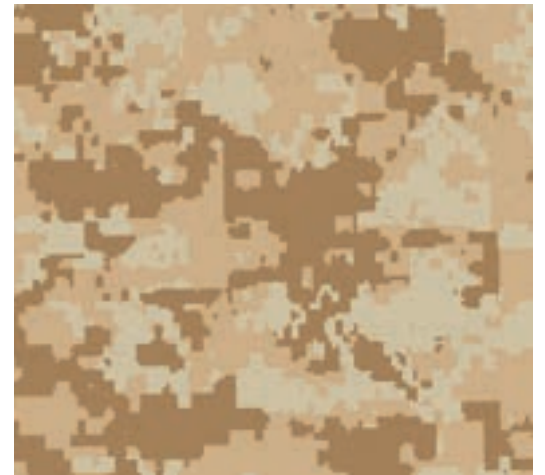




ST-2447 // Digicam Standard Issue



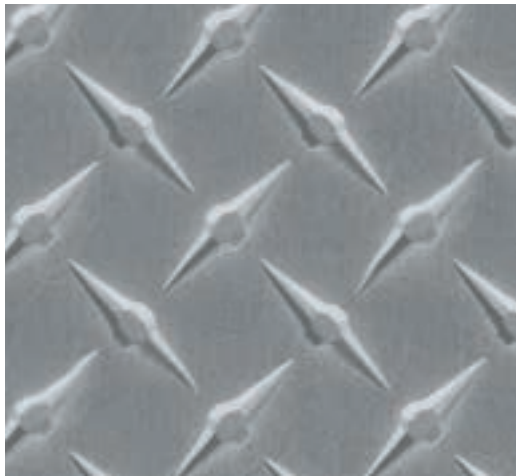
ST-2448 // Digicam Green



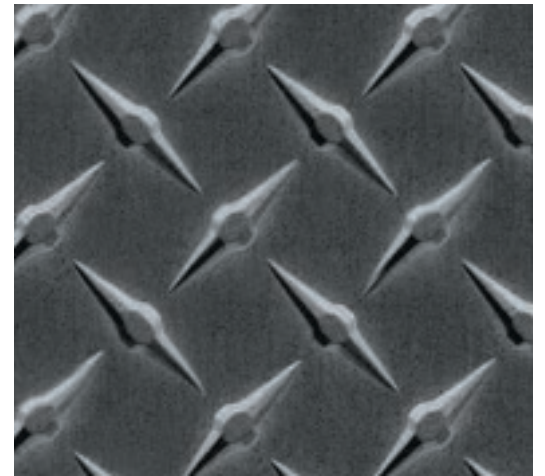
ST-2449 // Digicam Desert Storm



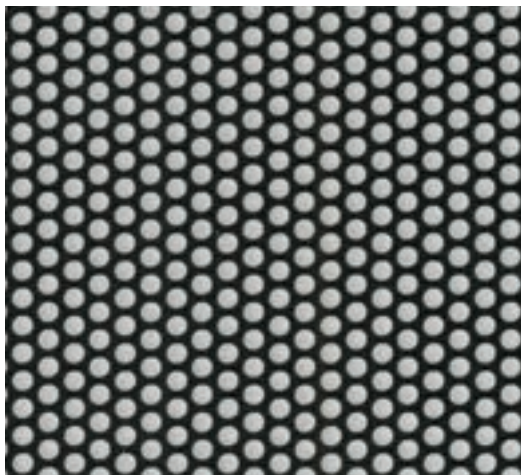
ST-2450 // Digicam Pink



ST-2454 // Diamond Plate



ST-2455 // Gun Metal Diamond Plate



ST-2459 // Silver Perforated Metal



ST-2460 // Pewter Perforated Metal



ST-2461 // Bronze Perforated Metal



CHROME

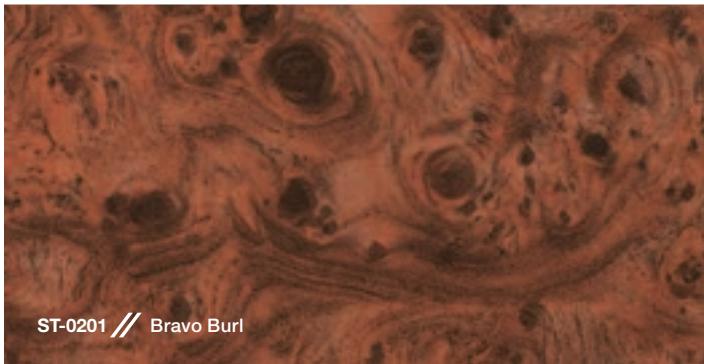
RM-2001

Formable Chrome

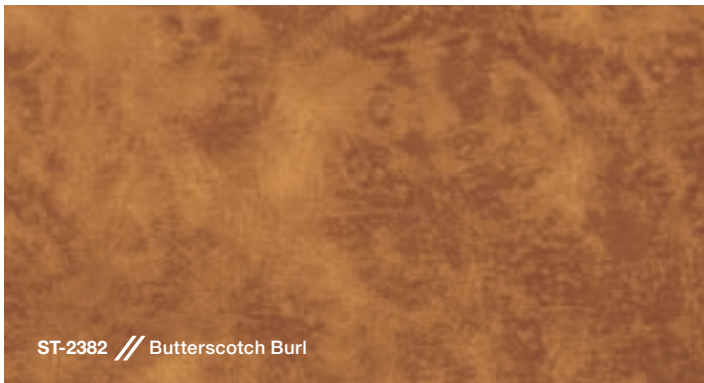
Rowmark Custom Laminations' Chrome laminate product provides a sleek, custom chrome finish for plastic parts and is an excellent alternative to heavier chrome metal products. This formable metalized film is popularly used by OEM's for heavy truck, marine and automotive accessories and is available for use on TPO and ABS substrates.



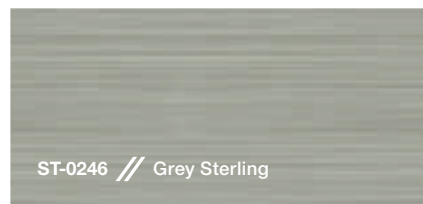
All colors/patterns available upon request at marketing@rowmarklaminations.com, and are available in both a matte & gloss finish.



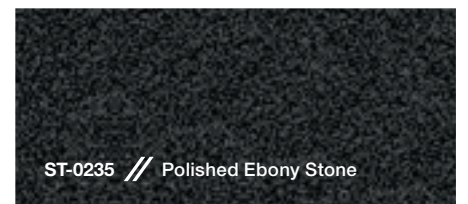
ST-0201 // Bravo Burl



ST-2382 // Butterscotch Burl



ST-0246 // Grey Sterling



ST-0235 // Polished Ebony Stone

NEW PATTERNS

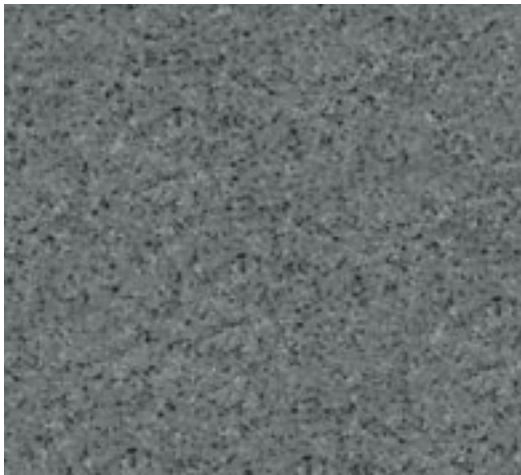
On the cutting edge of new product development, Rowmark Custom Laminations' design and R&D team works closely with top industry graphic artists and specifiers to meticulously develop just the right patterns for today's trending needs.

As with all products, RCL has the ability to produce custom straight wood grain finishes to create a one-of-a-kind effect for your application.

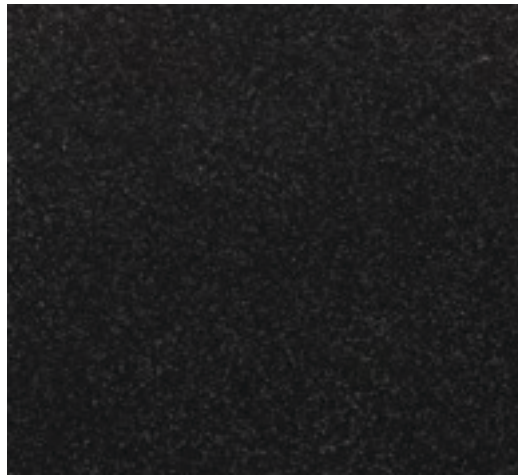
The patterns shown can be matched to any color or color combination. Please contact us to today to discuss your next custom project.

All colors/patterns available upon request at marketing@rowmarklaminations.com, and are available in both a matte & gloss finish.





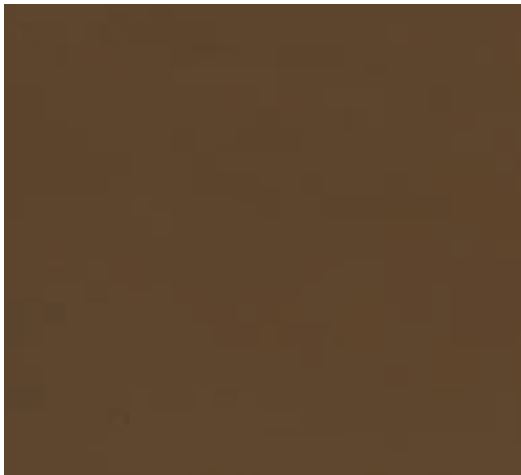
ST-2523 // Speckled Gray Granite



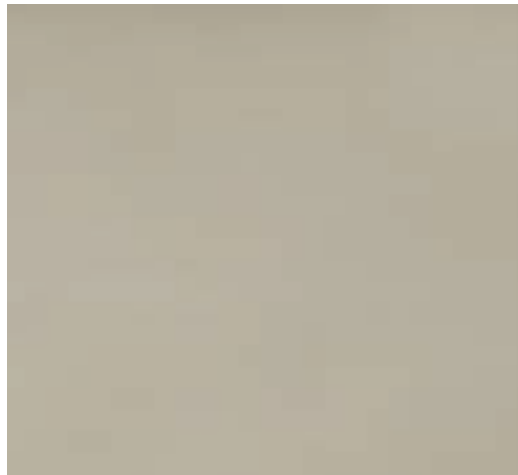
ST-2590 // Ebony Stardust



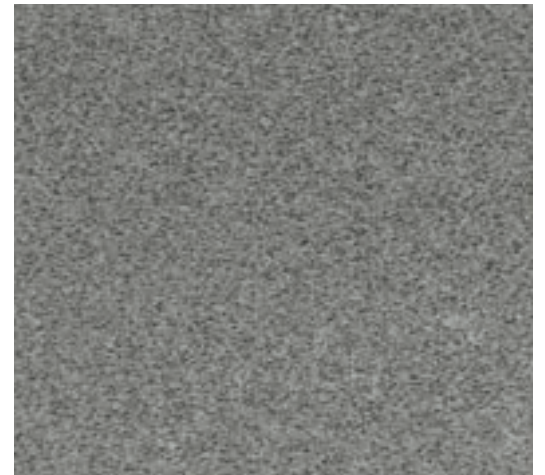
ST-2591 // Carbon Wave



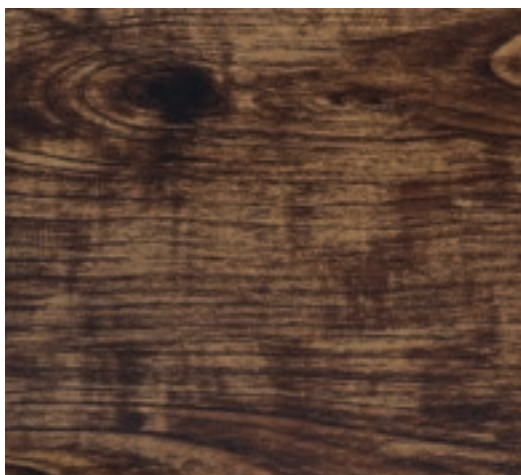
ST-2592 // Nutmeg



ST-2593 // Beige Dust



ST-2594 // Speckled Dust



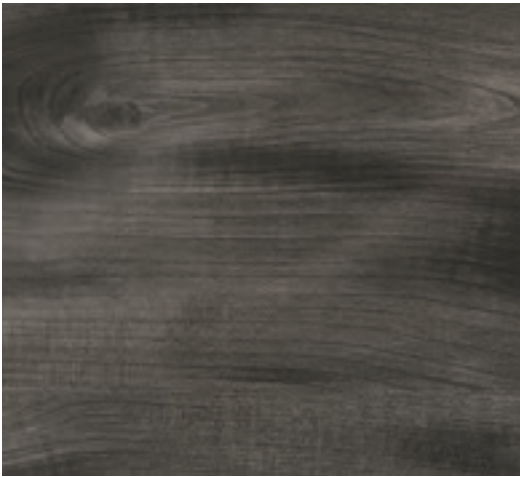
ST-2595 // Providence



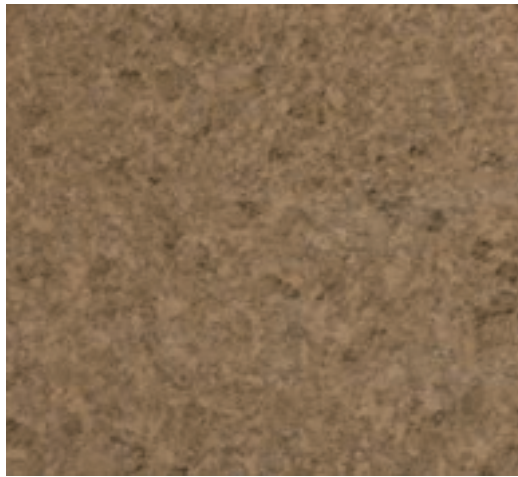
ST-2596 // Black Cherry



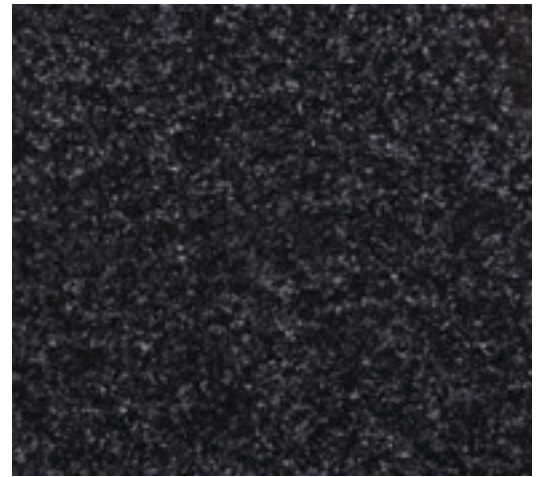
ST-2597 // JD Green



ST-2604 // Light Ashwood



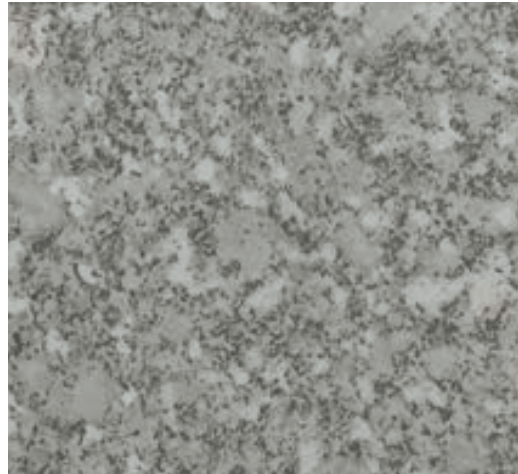
ST-2599 // Cocoa Granite



ST-2600 // Speckled Black Granite



ST-2601 // Almond White



ST-2602 // White Marble



ST-2603 // Speckled White Granite



ST-2598 // Charcoal Granite

DECOTech™

Series

DecoTech™ Series Features/Benefits: All of Rowmark Custom Laminations' "cap layer" DECOTech™ Series options are available to suit a wide variety of project needs. Depending on your end-use application and product requirements, the RCL team will assist you in determining which Series is suited for your application.

200 Series // PolyLam

- Thermoformed or flat panel application
- Light duty applications
- Tolerates minor scuffing & abrasion
- Screen-printable & engraveable

300 Series // Ultra Scuff

- Not thermoformable, flat panel only
- Enhanced scuff and UV resistance
- Can be silk screened and engraved

500 Series // Reversible

- Reverse-print film laminated to clear substrate
- 3-D effect
- Applicable for backlighting
- Flat panel & limited thermoforming
- Substrate provides excellent scuff protection
- Screen-printable & engraveable

1000 Series // Gloss

- High-gloss thermoforming
- Superior wear, scratch & abrasion resistance
- Great adhesion properties
- Recommended exterior use
- Enhanced UV & chemical resistance
- Maintained 2000 hours QUV testing
- Screen-printable
- Not recommended for flat panel applications

1100 Series // Matte

- Matte thermoforming applications
- Superior wear, scratch & abrasion resistance
- Great adhesion properties
- Recommended exterior use
- Enhanced UV & chemical resistance
- Maintained 2000 hours QUV testing
- Screen-printable
- Not recommended for flat panel applications

1130 Series // Satin

- Thermoforming applications
- Superior wear, scratch & abrasion resistance
- Great adhesion properties
- Recommended exterior use
- Enhanced UV
- Maintained 1000 hours QUV testing
- Not recommended for flat panel applications

DECOTech™

Compatibility Series

DecoTech™ Series Chart: The following chart compares the features and benefits of each Rowmark Custom Laminations DECOTech™ Series. Depending upon your end-use application and product requirements, the RCL team will assist you in determining which Series is best suited for you.

| SERIES | | DESCRIPTION | FORMABLE | OUTDOOR WEATHERABLE | SCREEN PRINTABLE | HIGH GLOSS FINISH | MATTE FINISH | MAX WIDTH (INCHES) | SUBSTRATES OFFERED |
|--------|-------------------------------|-------------|----------------|---------------------|------------------|-------------------|--------------|----------------------------------|--------------------|
| 200 | Cost effective, light duty | ■ | ■ ¹ | ■ | ■ ² | ■ | ■ | 36" | ABS/HIPS PC/TPO |
| 300 | Engravable flat panel | | | ■ | ■ | ■ | ■ | 36" | ABS/HIPS |
| 500 | Reverse printed on clear | ■ | ■ | ■ | ■ | ■ | ■ | 36" | PMMA/PC |
| 1000 | High gloss, durable surface | ■ | ■ | ■ | ■ | | | 36" (50" in limited patterns) | ABS/HIPS PC/TPO |
| 1100 | Matte finish, durable surface | ■ | ■ | ■ | | ■ | | 36" (50" in limited patterns) | ABS/HIPS PC/TPO |
| 1130 | Satin finish | ■ | ■ | ■ | | ■ | | 36" (50" in limited patterns) | ABS/HIPS PC/TPO |
| CHROME | Metalized chrome | ■ | ■ | ■ | ■ | | | 60" | ABS/HIPS PC/TPO |

1) Suitable for applications that require Epoxy or Polyurethane Pour.
 2) Will lose high gloss finish if part is thermoformed.